

# Wrapid Shield™ PE

## Impact Protection for Pipeline Coatings

Canusa-CPS' Wrapid Shield™ PE is an advanced extruded and blown polyethylene Rock Shield system engineered to provide high impact resistance and compressive strength when used as a protective layer over top of anti-corrosion coatings. The material resists impact damage due to rocky backfill materials or offshore lay barge rollers. Wrapid Shield™ PE helps to cushion any impact during the construction process, is more economical, lighter weight and easier to install than alternate methods of protection.



### High Performance System

- Manufactured from high density polyethylene with a blowing agent to produce a strong but lightweight cellular structure
- Multi-layer crisscross extrusion resulting in tight rhomboidal openings
- Open mesh allows water to flow around the pipe and will not shield cathodic protection, even when applied in multiple layers
- Chemically inert and will not rot
- Supplied as bulk rolls with widths suitable for wrapping up to a 28" diameter pipe using long lengths of material
- Plastic strapping or filament tape may be supplied as per project or customer requirements

### Rapid and Reliable Installation

- Installed along the pipe or around a field joint as per the diagrams on the back page
- Light weight rolls are easy to handle in the field
- Light weight system yet provides superior impact protection
- Secured by means of circumferential strapping tapes or similar
- Supplied in bulk roll widths ranging up to 2.4 m (7.8') or pre-cut sheets

### Applications



All Pipeline Coatings



Offshore Pipelines



Onshore Pipelines



All Pipe Sizes

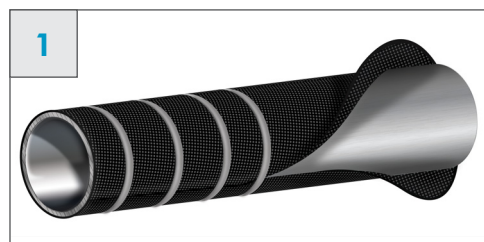


# Wrapid Shield™ PE

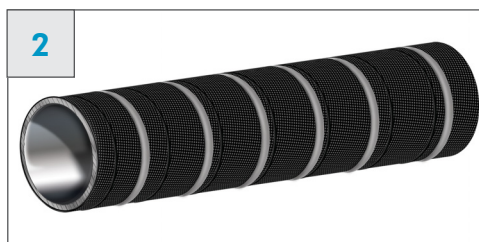
## Impact Protection for Pipeline Coatings

Property	Test Method	Typical Values
Polymer Density	ASTM D792	0.94 - 0.96
Weight	Measured	1800 g/m <sup>2</sup>
Thickness	Measured	10 mm
Aperture Size (MD / CD)	Measured	5 mm
Tear Strength	ASTM D624	8 kg/cm
Wide Tensile Strength	ASTM D4595	20 kg/cm
Compressive strength @ 50%	ASTM D1621	0.7 mPa
Falling Weight Impact	ASTM G14	45 J
Limestone Drop Test	ASTM G13	Pass, 10 drops

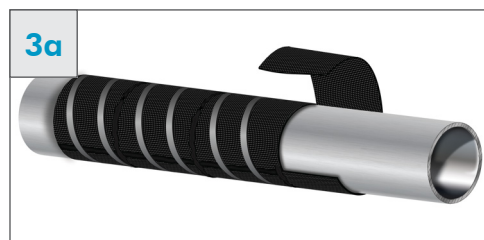
### Latitudinal or Circumferential Wrapping



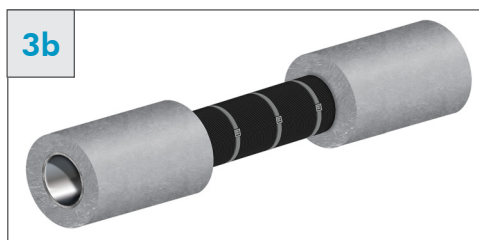
Longitudinally wrap custom width rolls for pipelines up to 28" in diameter or...



... spirally wrap from bulk rolls for larger diameter pipelines.



Cut to length for larger diameter pipelines or field joints by circumferentially wrapping cut sheets from bulk rolls.



**4** Strap the rolls or the pre-cut sheets around the pipe with filament tape or appropriate non-metallic strapping.

**5** Recommended product overlap is at the bottom of the pipe or shiplapped along the pipeline to avoid separation during backfill.

Since 1967, Canusa-CPS has been a leading developer and manufacturer of specialty pipeline coatings for the sealing and corrosion protection of pipeline joints and other substrates. Canusa-CPS high performance products are manufactured to the highest quality standards and are available in a number of configurations to accommodate many specific project applications.

The product information shown here is intended as a guide for standard products.

Consult your Canusa representative for specific projects or unique applications.



### Canusa-CPS A division of ShawCor Ltd.

#### Head Office

25 Bethridge Rd.  
Toronto, ON M9W 1M7 Canada  
Tel: +1 416 743 7111  
Fax: +1 416 743 5927

#### Canada

Suite 3200, 450 - 1st Street S.W.  
Calgary, AB T2P 5H1 Canada  
Tel: +1 403 218 8207  
Fax: +1 403 264 3649

#### Americas

3838 N. Sam Houston Pkwy E.  
Suite 300  
Houston, TX 77032  
Tel: +1 281 886 2350  
Fax: +1 281 886 2353

#### Europe, Middle East, Africa & Russia

Unit 3, Sterling Park,  
Gatwick Road, Crawley, West Sussex  
RH10 9QT United Kingdom  
Tel: +44 1293 541254  
Fax: +44 1293 541777

#### Asia-Pacific

101 Thomson Road, #17-01  
United Square, Singapore 307591  
Tel: +65 6477 5300  
Fax: +65 6732 9073

### Canusa-CPS is registered to ISO 9001:2008

Canusa warrants that the product conforms to its chemical and physical description and is appropriate for the use stated on the product data sheet when used in compliance with Canusa's written instructions. Since many installation factors are beyond our control, the user shall determine the suitability of the products for the intended use and assume all risks and liabilities in connection therewith. Canusa's liability is stated in the standard terms and conditions of sale. Canusa makes no other warranty either expressed or implied. All information contained in this data sheet is to be used as a guide and is subject to change without notice. This data sheet supersedes all previous data sheets on this product. E&OE

PDS\_Wrapid Shield™ PE\_rev021